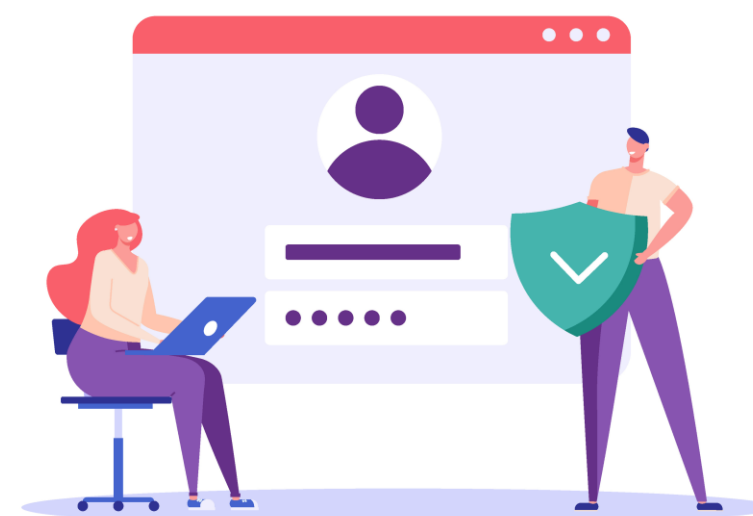
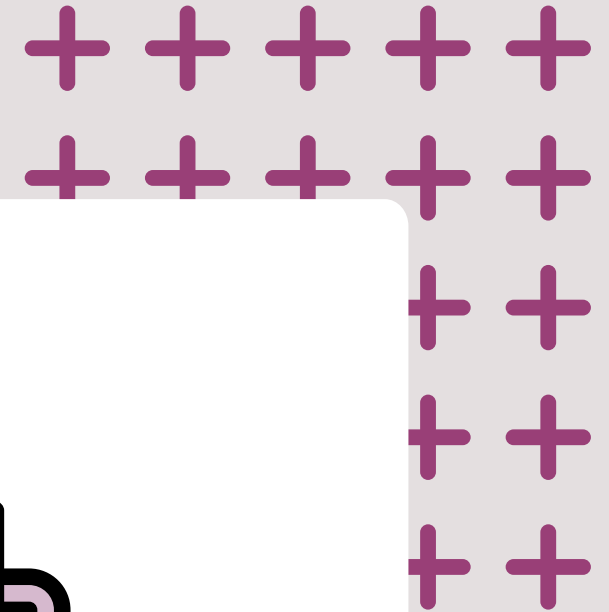


Extranet User Manager: Mini-Webinar Series

# Public Registration for a Training Plan in LMS365

[www.eum.co](http://www.eum.co)





# In this session...

## Public Registration

We will demonstrate how users can quickly and easily self-register for a training plan in LMS365 using their preferred credentials. The EUM registration portal can be fully customized to your organizations unique brand and needs, with the ability to incorporate approval workflows, e-commerce, and many API integrations.



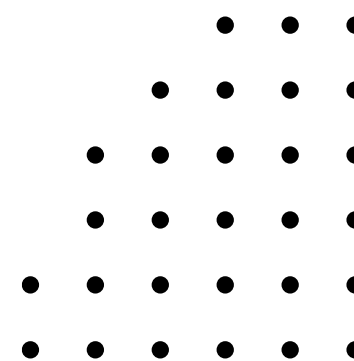
# Use Cases

---

Public Registration is intended for organizations that do not know precisely who will need access to their organization and want their external training/resources to be publicly accessible, with minimal administration.

## Example scenarios:

- Prospective customers who want to learn more about the product/service they are purchasing
- People interested in volunteering who want to learn about the organization and role(s)
- People interested in joining an association, who need to take training or provide documentation as a part of the registration process
- Salespeople at a partner organization that would like to take product or service training
- A company providing specific training to the public or to people who meet a certain criteria



# Self-Registration Portal

LMS365 Portal Login / Register

Home > Account

Registration - Knockout

Clients   
 Clients registration description.

Partners   
 Partners registration description.

Public   
 Public registration description.

### Public Registration

**Profile**

Email \*   
 testoumlms@mailinator.com

First Name \*

Last name \*

Company Name

Mobile Phone

Job Title

**Options**

Subscribe to Mailing List

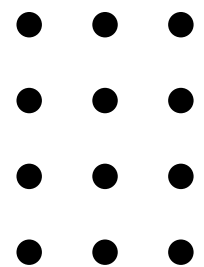
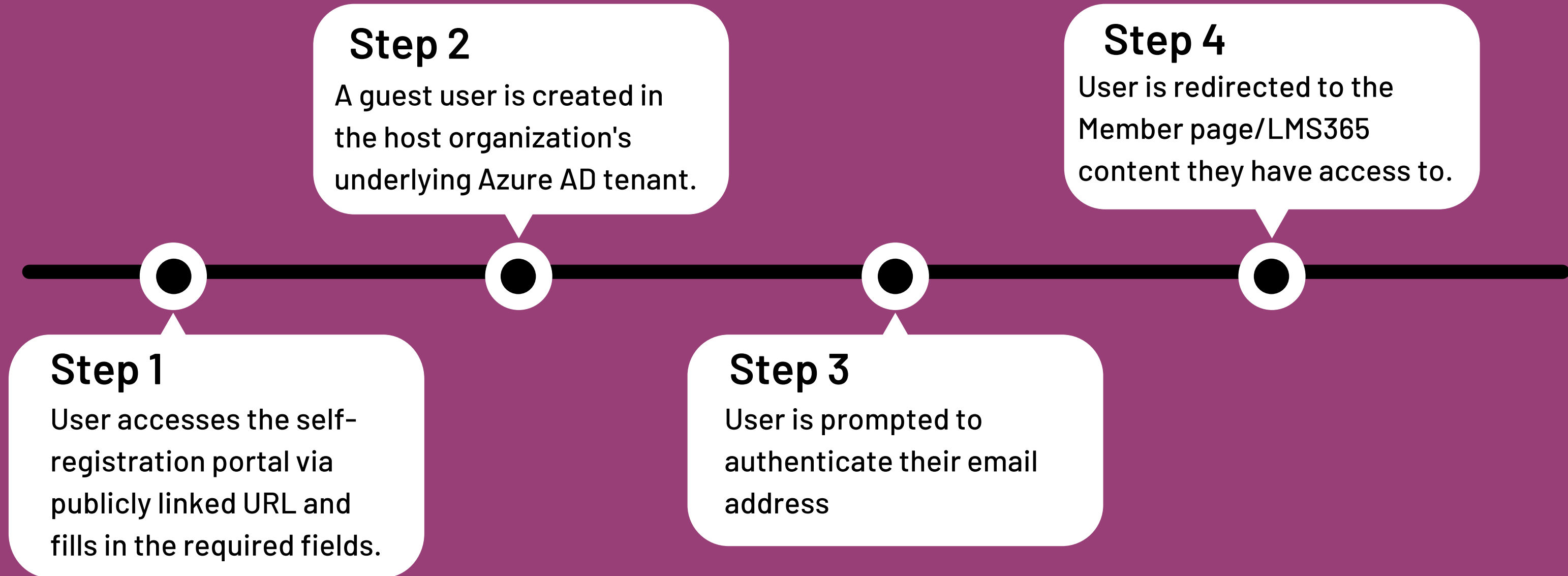
Show in Directory

Register

© LMS365 Portal 2022 · Privacy · Terms of Use · Trademarks · DPA Contact Us · lms365.com

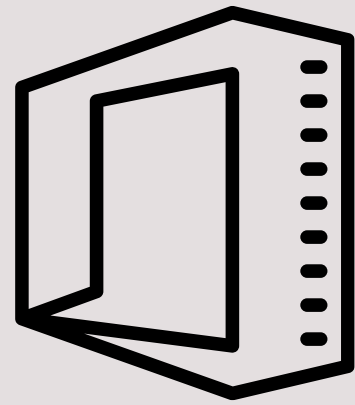


# Step by Step





# User Login Experiences



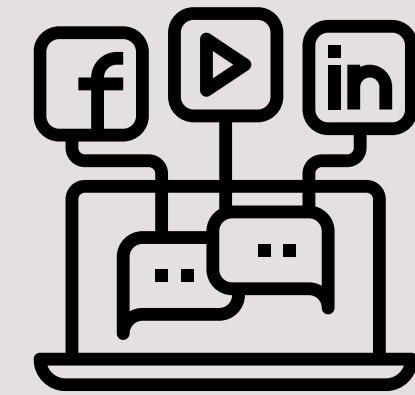
## Existing Microsoft 365

- User logs in with Azure AD Credentials
- SSO already enabled if signed into Microsoft 365
- Also works for Microsoft accounts



## Non- Microsoft 365

- One-Time Passcode emailed at initial sign-in
- Low friction; no need to create a new account or credentials
- Validates email at each sign-in



## Social User

- Federation with Google and Facebook accounts supported
- Same seamless experience as Microsoft 365

# Demo

# Thank you for watching!

Feel free to contact us with any questions:



**Irina Kenic**

Partner Success Manager  
[ikenic@envisionit.com](mailto:ikenic@envisionit.com)



**Logan Guest**

Sales & Marketing Manager  
[lguest@envisionit.com](mailto:lguest@envisionit.com)

Want to try EUM out? Go self register for a group at : <https://lms365-portal.eumdemo.com/>